



Herbal & Ayurvedic

As pure as nature



**Herbal Capsule, Herbal Powder,
Herbal Extract, Herbal Juice,
Syrups, Herbal Tea**



ABOUT US

Blumoon Universal Pvt. Ltd. is committed to promoting holistic wellness through the power of nature. Under our brand Blu Herbs, we offer premium herbal products inspired by the ancient wisdom of Ayurveda.

As a trusted Exporter and Manufacturer, we create a wide range of products tailored to our clients' needs. Backed by a skilled team with years of expertise, our vision is to share India's rich wellness heritage with the world.

Choose Blu Herbs for natural solutions that nurture well-being and connect you with the essence of Ayurveda.



OEM & WHITE LABEL MANUFACTURING BY BMU

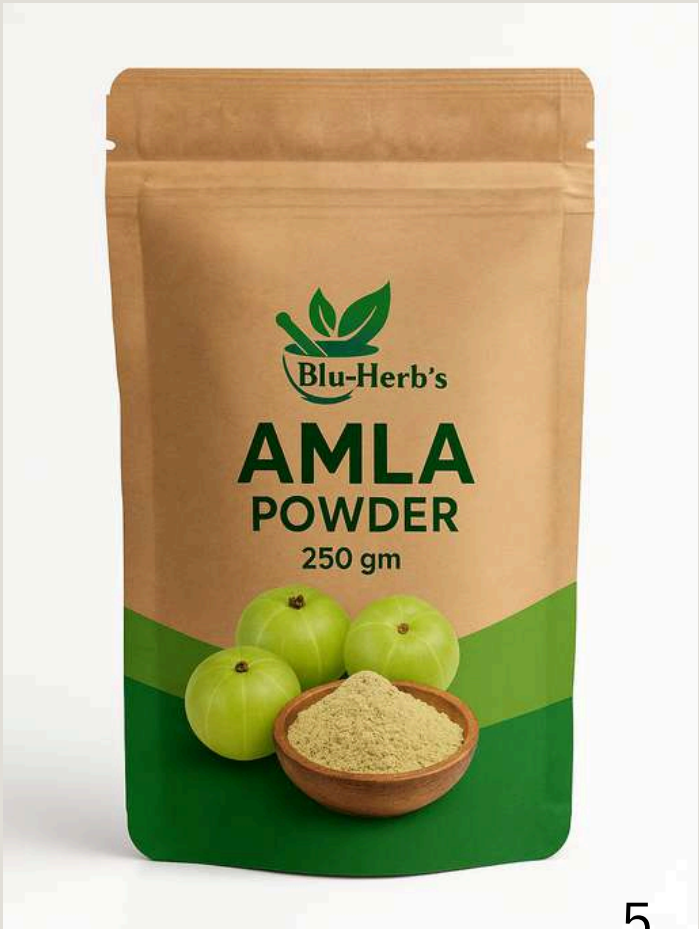


BMU is a trusted manufacturer specializing in OEM (Original Equipment Manufacturing) and White Label solutions for herbal supplements, Ayurvedic products, and wellness formulations. We help businesses launch their own brand with premium-quality, ready-to-market herbal and natural health products.

HERBAL POWDER



Herbal Powder



SEXUAL WELLNESS



- Blu Herbs Ignite – A natural libido booster.
- Blu Herbs Harmony – Intimacy-enhancing capsules.
- Blu Herbs Euphoria – Herbal pleasure oil.
- Blu Herbs Pulse – Energy and stamina tonic.
- Blu Herbs Desire Drops – Aphrodisiac tincture.
- Blu Herbs Tantra – Massage oil for couples.
- Blu Herbs Vital Spark – Male vitality supplement.
- Blu Herbs Sensuelle – Female arousal gel.
- Blu Herbs Aphro Nectar – Herbal sexual wellness drink
- Blu Herbs Passion Bloom – Hormonal balance capsule
- Blu Herbs Vita-Life - Boosts Overall Energy.



Herbal Capsules



TESTOBOOST



TestoBoost capsules are dietary supplements commonly marketed to men aiming to enhance testosterone levels naturally. They are often advertised as a way to improve physical performance, muscle growth, and overall vitality.

- Increased Muscle Growth
- Enhanced Energy Levels
- Improved Libido
- Mood Enhancement
- Fenugreek extract
- D-aspartic acid

VITA-LIFE CAPSULE



VitaLife Capsule are designed to improve and maintain sexual health, which is a key aspect of overall well-being. These products cater to a range of needs, from boosting libido and enhancing performance to addressing specific concerns such as hormonal imbalances, reduced energy, or stress-related issues.

- Improved Libido and Desire
- Enhanced Performance
- Increased Energy Levels
- Stress and Anxiety Reduction
- Enhanced Sensation and Pleasure

SHILAJIT GUMMIES



Blu Herbs Shilajit Gummies

Natural Himalayan Power in a Tasty Gummy!

Blu Herbs Shilajit Gummies bring you the ancient strength of Himalayan Shilajit in a convenient, delicious, and easy-to-consume form. Sourced directly from the pristine mountains, our Shilajit is lab-tested for purity and high fulvic acid content, ensuring maximum potency and effectiveness.

SHILAJIT RESIN



Shilajit is a mineral-rich resin from the Himalayas, known for its health benefits. It contains fulvic acid, which aids in nutrient absorption, detoxification, and boosting energy. Blu Herbs sources pure Shilajit from the Himalayas and provides lab test reports for its high fulvic acid content, ensuring quality and authenticity.

SHILAJIT CAPSULE



- Boosts Energy and Stamina
- Enhances Brain Function
- Supports Testosterone & Reproductive Health
- Improves Heart Health
- Anti-Aging Properties
- Enhances Immunity
- Improves Gut Health

SLIM-FIT CAPSULE



Blu Herbs Slim Fit Capsules are formulated with potent natural ingredients to support healthy weight management and boost metabolism.

- Supports Weight Management – Helps regulate fat metabolism and promotes a healthy body composition.
- Boosts Metabolism – Enhances the body's natural calorie-burning process.
- Aids Digestion – Supports a healthy digestive system and reduces bloating.
- Suppresses Appetite – Helps control cravings and reduce overeating.

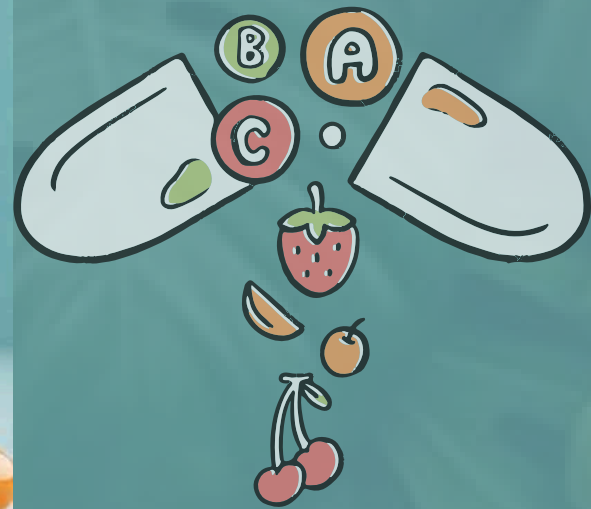
ASHWAGANDHA



Ashwagandha capsules are commonly used for their potential health benefits, especially in the realm of stress management and overall well-being. Some of the key benefits include:

- Stress Reduction
- Improved Sleep
- Enhanced Energy and Stamina
- Cognitive Function Support
- Anti-Inflammatory Effects
- Muscle Strength and Recovery

MULTIVITAMINS



Multivitamin capsules are a comprehensive blend of essential vitamins, minerals, and nutrients designed to support your overall health and well-being. Packed with antioxidants, energy boosters, and immune-enhancing ingredients, they help bridge nutritional gaps in your daily diet.

- Boosts Energy Levels
- Strengthens Immunity
- Improves Skin, Hair, and Nail Health
- Enhances Brain Function
- Supports Heart Health
- Maintains Bone Strength

SAFED MUSLI



Safed Musli is a medicinal herb widely used in Ayurveda and traditional medicine for its health-enhancing properties. It is known for its adaptogenic, aphrodisiac, and rejuvenating qualities.

- Sexual Health & Aphrodisiac Benefits
- Strength & Stamina
- Immunity Booster
- Diabetes Management

ARJUNA CAPSULE



Arjuna, scientifically known as *Terminalia arjuna*, is an Ayurvedic herb widely used for its numerous health benefits. Here are some key benefits of Arjuna capsules

-
- Heart Health
- Antioxidant Properties
- Blood Sugar Regulation
- Stress and Anxiety Relief
- Liver Health
- Wound Healing

KARELA CAPSULE



Karela (Bitter Gourd) is widely known for its health benefits, especially in traditional medicine. Some of the key benefits of Karela capsules include

- Supports Blood Sugar Management
- Promotes Digestive Health
- Supports Weight Loss
- Boosts Immunity
- Improves Skin Health
- Liver Detoxification
- Rich in Antioxidants
- Improves Heart Health

SHATAVARI CAPSULE



Shatavari, known as *Asparagus racemosus*, is a well-known herb in Ayurvedic medicine, particularly for its numerous benefits for women's health.

- Supports Reproductive Health
- Boosts Immunity
- Promotes Digestive Health
- Enhances Lactation
- Antioxidant Properties
- Reduces Stress and Anxiety:
- Supports Overall Vitality and Energy

Neem Capsule



Neem capsules, made from the extract of Neem (*Azadirachta indica*), are highly regarded in traditional medicine for their numerous health benefits. Below are the key benefits of Neem capsules

- Promotes Skin Health
- Supports Immune System
- Detoxifies the Body
- Regulates Blood Sugar Levels
- Improves Oral Health
- Supports Hair and Scalp Health

MORINGA CAPSULE



- Rich in Nutrients
- Powerful Antioxidant Properties
- Supports Immune System
- Promotes Healthy Digestion
- Helps Manage Blood Sugar Levels
- Supports Heart Health
- Anti-Inflammatory Effects
- Boosts Energy Levels
- Supports Brain Health
- Aids Weight Management

WHEAT GRASS CAPSULE



- Rich in Nutrients
- Boosts Immunity
- Aids in Detoxification
- Improves Digestion
- Increases Energy Levels
- Supports Weight Loss
- Regulates Blood Sugar Levels
- Heart Health
- Anti-Inflammatory Properties

OMEGA 3 FISH OIL CAPSULE



- Heart Health
- Brain Health
- Joint and Bone Health
- Eye Health
- Skin Health
- Anti-Inflammatory Effects
- Supports Pregnancy and Infant Development
- Immune System Boost

TRIPHALA CAPSULE



Triphala is an ancient Ayurvedic herbal formula made from three fruits: Amla (Indian gooseberry), Haritaki (Chebulic myrobalan), and Bibhitaki (Belleric myrobalan). Triphala capsules offer numerous health benefits, including:

- Antioxidant Properties
- Immune Support
- Anti-inflammatory Effects
- Skin Health
- Liver Detoxification
- Respiratory Health

ShuddhShwas Capsule



Anti-smoking herbal capsules

Anti-smoking herbal capsules are designed to help individuals reduce nicotine cravings and support the body's natural detoxification process. These capsules are typically made with Ayurvedic and herbal ingredients that aid in quitting smoking naturally.

- Reduces Nicotine Cravings
- Lung Detoxification
- Reduces Stress & Anxiety
- Improves Lung Health
- Enhances Energy & Stamina
- Supports Liver Detox
- Boosts Immunity



EFFERVESCENT TABLET



- Vitamin & Mineral Effervescent Tablets
- Energy & Hydration Boosters
- Herbal & Ayurvedic Effervescent Tablets
- Digestive Health & Detox Tablets
- Joint & Bone Health Effervescent Tablets
- Sleep & Relaxation Effervescent Tablets
- Immune-Boosting Effervescent Tablets

- ✓ Faster Absorption
- ✓ Convenient & Easy to Consume
- ✓ Better Hydration
- ✓ Great Taste with No Swallowing Difficulty
- ✓ Reduced Stomach Irritation

CHYAWANPRASH



Chyawanprash is a powerful Ayurvedic formulation made from a blend of over 40+ natural herbs and superfoods. It is designed to boost immunity, energy, and overall well-being.

- Boosts Immunity
- Supports Respiratory Health
- Promotes Digestive Health
- Anti-Aging & Rejuvenating
- Supports Heart & Brain Function
- 100% Natural & Herbal | No Artificial Additives | Suitable for All Ages

NONI JUICE



Noni Juice is a health beverage derived from the fruit of the Noni plant (*Morinda citrifolia*), which is native to Southeast Asia and the Pacific Islands. Known for its distinct, slightly bitter taste and pungent aroma, Noni juice is often consumed for its potential health benefits.

ALOEVERA JUICE



Aloe vera juice is a nutrient-rich liquid extracted from the aloe vera plant's inner leaf. It has been used for centuries in traditional medicine for its healing and rejuvenating properties.

- Supports Digestive Health
- Hydration Powerhouse
- Skin Nourishment
- Detoxifies the Liver

SEA BUCKTHORN



Sea buckthorn juice is derived from the berries of the sea buckthorn plant (*Hippophae rhamnoides*), a hardy shrub that grows in cold regions of Europe and Asia. This juice is highly regarded for its nutritional benefits and is often used in health and wellness products.

- Omega Fatty Acids
- Antioxidants
- Minerals

WELL 18 JUICE



AloeVera, Tulsi, Giloy, Amla, Neem, Ashwagandha, Turmeric, Ginger, BlackPepper, Cinnamon, Cardamom, Fennel Seeds, Haritaki, Bahera, Shatavari, Moringa, Mint, Licorice Root

Well 18 Juice is a blend made from 18 carefully selected herbs, offering a rich combination of natural health benefits. This type of juice is typically marketed as a wellness product due to its herbal composition, designed to support overall health and vitality.

HERBAL TEA

- Chamomile Tea
- Peppermint Tea
- Hibiscus Tea
- Ginger Tea
- Lemon Balm Tea
- Rooibos Tea
- Lavender Tea
- Rosehip Tea
- Turmeric Tea
- Dandelion Root Tea



HERBAL DROPS

- Ashwagandha Vital Drops
- Tulsi Immunity Drops
- Brahmi Focus Drops
- Amla Health Drops
- Giloy Wellness Drops
- Neem Detox Drops
- Shatavari Women's Care Drops
- Moringa Energy Drops
- Turmeric Gold Drops
- Triphala Digestive Drops



HERBAL PAIN RELIEF



- Pain Relief Balm
- Herbal Muscle Relaxant Oil
- Turmeric Pain Relief Cream
- Joint Pain Oil
- Ayurvedic Massage Oil
- Herbal Roll-On for Headache
- Orthopedic Pain Relief Cream
- Arnica Pain Relief Gel
- Mentholated Herbal Balm
- Camphor Pain Relief Oil

HERBAL HEALTH TONICS & SYRUPS

- Chyawanprash
- Herbal Cough Syrup
- Blood Purifier Syrup
- Digestive Tonic
- Giloy Tulsi Juice
- Apple Cider Vinegar
- Jamun Karela Juice
- Heart Care Tonic
- Liver Detox Syrup
- Women's Health Tonic



HERBAL DRY EXTRACT



Name	Specifications
• ALOE VERA	5 - 20% POLYSACCHARIDES
• AKAKARA	0.25% ALKALOIDS
• AMLA	20 - 40% TANIN
• ARJUNA	10 - 20% TANIN
• ASHOKA	10 - 30% TANIN
• ASHWAGANDHA	2.5 - 7.5% TOTAL WITHANOLIDES
• BACOPA / BRAHMI	50% BACOSIDES
• BAHEDA	20 - 40% TANIN
• BHRINGRAJ	2.5% WEDALACTONE
• BHUMIAMLA	20% BITTER / TANNIN
• BLACK SEED	10% SAPONIN
• BOSWELLIA	65% BOSWELLIC ACID
• CHIRAYATA	5% BITTER
• COLEUS	10 - 30% FORSKOLIN
• CURCUMIN	95% CURCUMINOIDES
• GANODERMA	20% - 30% POLYSACCHARIDES
• GARCENIA	50 - 60% CHROMADEX STD
• GARLIC	2.5% ALICIN
• GILOY	2.5 - 10% BITTER
• GINSENG	20% GINSENOSIDE
• SENNA	10% - 20% SENNOSIDES
• SAFED MUSALI	40% SAPONIN
• SHILAJIT	10% - 30% FULVIC ACID
• SPIRULINA	60% PROTEIN
• TAGAR	0.8% VALERENIC ACID
• TRIPHALA	20 - 40% TANIN
• TULSI	20% TANIN
• VASAKA	1.0% ALKALOIDS
• VIJAYSAR	10% TANNIN

- | | |
|----------------------|--------------------------------|
| • GINGER | • 5.0% GINGEROLS |
| • GOKHRU | • 40% SAPONIN |
| • GREEN TEA | • 50% - 90% POLYPHENOLS |
| • GRAPE SEED | • 95% OPC |
| • GUGGAL | • 2.5% - 5% GUGGALSTERONE |
| • GUDMAR | • 25% - 75% GYMNEMIC ACIDS |
| • HADJOD | • 30% SAPONIN / KETO-STERONE |
| • HARDE | • 20 - 40% TANIN |
| • IMLI | • 15% TARTARIC ACID |
| • JAMUN SEED | • 20% SAPONIN / 4% TANIN |
| • JATAMANSI | • 2% JATAMANSONE |
| • KALMEGH | • 10% - 30% ANDROGRAPHOLIDE |
| • KARELA | • 10% BITTER |
| • KUTKI | • 5% BITTER |
| • KAVACH | • 20% L-DOPA |
| • LEMON PEEL | • 10% CITRIC ACID |
| • LICORICE / MULETHI | • 10 - 20% GLYCYRRHIZIN |
| • MANDUKPARNI | • 20% ASIATICOSIDE |
| • MANJISTHA | • 2% TANNIN |
| • METHI / FENUGREEK | • 50% SAPONIN |
| • MILK THISTLE | • 80% SILYMARIN |
| • MORINGA | • PROTEIN - 20% |
| • NEEM | • 2.5 - 7.5% BITTER |
| • NONI | • 20 - 40% SAPONIN / MORINDIN |
| • PAPAYA LEAF | • 10 - 20% GLYCOSIDE / SAPONIN |
| • PMEGRANATE / ANAR | • 40% POLYPHENOL |
| • PIPERINE | • 95% PIPERINE |
| • PUNARNAVA | • 1% ALKALOIDES |
| • REETHA | • 40% SAPONIN |
| • SHATAVARI | • 40% SAPONIN |

LIQUID EXTRACTS (W/S & O/S)

Name	Botanical name
<ul style="list-style-type: none"> • Ajwain • Almond • Aloe Vera • Amba Guthli • Amla • Anantmool • Anjir • Apple • Apricot • Aritha • Arjun Bark • Arnica • Ashwagandha • Avocado • Babul Gum • Baheda • Bhui Ringani / Kantkari • Bhringaraj • Brahmi • Cabbage • Calendula • Camphor • Carrot • Chamomile • Chanothi • Cinnamon • Clove • Coconut Shell 	<ul style="list-style-type: none"> • Carum Caupiticum • Amygdalus Communis • Aloe Barbadensis Miller • Mangifera Indica • Emblica Officinalis • Hemidesmus Indicus • Ficus Carica • Pyrus Mallus • Prunus Armeniaca • Sapindus Trifoilatus • Terminalia Arjuna • Arnica Montana • Witahnia Somnifera • Persea Americana • Acacia Arabica • Terminalia Belerica • Solanum Xanthocarpum • Eclipta Alba • Centella Asiatica • Brassica Oleracea • Calendula Officinalis • Cinnamonum Camphora • Daucus Carrota • Matricaria Chamomila • Abrus Precatorious • Cinnamonum Zeylanicum • Eugenia Carophyllus • Cococs Nucifera

- Cucumber
- Cumin / Jeera Seeds
- Dadam Peel
- Dark Chocolate
- Daru Haldi
- Devdhar
- Dhania
- Elaichi / Cardamom
- Gali Paan
- Ghodavaj / Vacha
- Ginger
- Grape Seed
- Green Tea
- Guava
- Guggal
- Harde
- Heena
- Jasmine
- Jasud Flower (Hibiscus)
- Jatamasi (Balchhad)
- Jivanti
- Jojoba
- Jyotishmati
- Kakmachi
- Kakrasingi
- Kamal Phool, Lotus
- Kapur Kachli
- Karanj Beej
- Kasni Beej
- Kesuda Flowers
- Khurasani Ajmo
- Khus, Valo

- Cucumis Sativus
- Cuminum Cyminum
- Punica Granatum
- Theobroma CACAO
- Berberis Aristata
- Cedrus Deodara
- Coriandrum Sativum
- Ellataria Cardamomum
- Indigofera Tinctoria
- Acorus Calamus
- Zingiber Officinalis
- Vitis Vinifera
- Camelia Sinensis
- Psidium Guava
- Commiphora MUKUL
- Terminalia Chebula
- Lawsonia Alba
- Jasminum Officinale
- Hibiscus rosa Chinensis
- Nardostachys Jatamasi
- Leptadenia Reticulata
- Simmondsia Chinensis
- Celastrus Paniculatus
- Solanum Nigrum
- Rhus Succedanea
- Nelumbo Nucifera
- Hedychium Spicatum
- Pongamia Glabra
- Cichorium Intybus
- Butea Frondosa
- Hyoscymus Niger
- Vetivera Zizaniodes

- Kiwi
- Laksha
- Lata Kasturi (Ambrette Seeds)
- Lemon Grass
- Lemon Peel
- Lodhar
- Manjistha
- Methi
- Mindhal
- Mixed Fruits
- Morinda / Mulberry / Noni
- Moringa Leaves
- Mulethi
- Mushroom
- Nagarmotha
- Nagkesar
- Neem Leaves
- Nilgiri
- Nirgundi
- Orange Peel
- Papaya
- Patol katu
- Peach
- Pineapple
- Potato Starch
- Pudina
- Punarnava / Satodi
- Rose
- Raal
- Raktachandan
- Sallai Guggal
- Sandalwood
- Sarpankha

- Actinidia Deliciosa
- Laccifer LACCA
- Hibiscus Abelmoschus
- Cymbopogon Citratus
- Citrus Lemon
- Symplocos Racemosa
- Rubia Cordifolia
- Trigonella foenum Graceum
- Randia Dumentorum
- Pineapple+Papaya
- Morinda Citrifolia
- Moringa Oleifera
- Glycyrrhiza Glabra
- Agaricus Bisporus
- Cyperus Rotundus
- Messua Ferrea
- Melia Azadirachta
- Eucalyptus Globulus
- Vitex Negundo
- Citrus Aurantium
- Carica Papaya
- Trichosanthes Dioeca
- Prunus Persica
- Ananas Comosus
- Solanum Tuberosum
- Mentha Piperata
- Boerrhavia Diffusa
- Rosa Damascena
- Shorea Robusta
- Pterocarpus Santalinus
- Boswellia Serrata
- Santalum Album
- Tephrosia Purperia

- Shatavari
- Sitaphal Seeds
- Shailaja (Patharphool)
- Shankhaval
- Shikakai
- Soyabean
- Spinach
- Spirulina
- Strawberry
- Suwa
- Tea Tree
- Tomato
- Triphala
- Tulsi
- Turmeric
- Vasaka / Ardu
- Walnut
- Watermelon Fruit
- Wheat Germ
- Yogurt Whey
- Witch Hazel

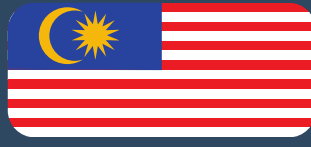
- Asparagus Racemosus
- Annona Sqamosa
- Permalia Perlata
- Convolvulus Pluricaulis
- Acacia Conccina
- Soya Hispida
- Spinacia Oleracea
- Arthrospira Platensis
- Fragaria Ananassa
- Anethum Graveolens
- Melaleuca Alternifolia
- Lycopersicon Esculentum
- Mixture of Harde, Baheda & Amla
- Ocimum Sanctum
- Curcuma Longa
- Adhatoda Vasica
- Juglans Regia
- Citrullus Vulgaris
- Avena Sativa
- Yogurt Whey
- Hamamelis Virginiana L.



International
Organization for
Standardization



Global Exposure



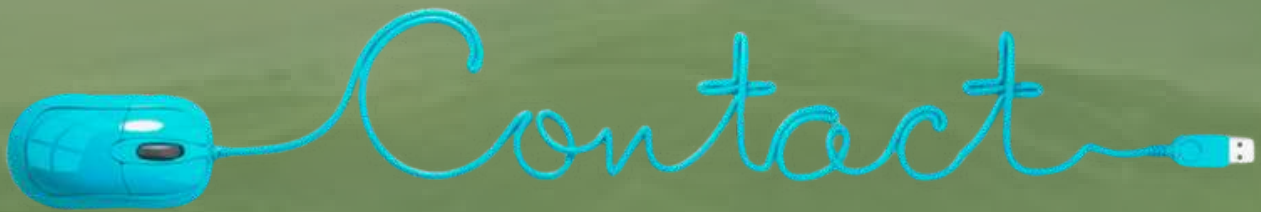
MAKE IN INDIA



विदेश व्यापार महानिदेशालय
DIRECTORATE GENERAL OF
FOREIGN TRADE



FEDERATION OF INDIAN
EXPORT ORGANISATIONS



Contact: 📞 +91 89627-21536

Email: ✉ info@blumoonuniversal.com

Website: 🌐 www.blumoonuniversal.com

Address: 📍 Powai, Sakivihar Road, Mumbai,
Maharashtra, India - 400072

